

A Seamless Solution for Standing Seam Roofs

When you need to protect the investment of a standing seam roof, you need a non-penetrating anchor.



023-4095

STANDING SEAM SRL SWIVEL ANCHOR

023-4095

Swivel base fits most SRLs plus D-ring connection for energy absorbing lanyards and both vertical and horizontal lifelines



023-4096

STANDING SEAM SWIVEL ANCHOR

023-4096

Swivel D-ring provides connection for energy absorbing lanyards, SRL-Ps and vertical lifelines

VERSATILE >>>

Adjustable crossarm spans 24"-40" to fit different widths on both flat and pitched roofs

EASY TO INSTALL >>>

Save time with quick, easy installation and removal – locks securely with detent pins



COMPLETE >>>

Includes S-5-U clamps to fit a variety of profiles



023-4095 (6) clamps; 023-4096 (4) clamps

Standing Seam Roofs Require Non-Penetrating Anchors

Standing seam roofs are attractive, durable and watertight – and growing in popularity for residential and commercial use. The concealed fasteners leave no exposed penetration, providing better water protection. As a more expensive roofing option, anchors used on these roofs must protect the roofing investment.

A standing seam metal roof has a return on investment of 48.9%

(2024 Remodeling Magazine, Cost vs. Value report)

NON-PENETRATING ANCHOR POINTS – EASY TO INSTALL, REUSABLE ON FLAT OR PITCHED ROOFS.

STANDING SEAM SRL SWIVEL ANCHOR 023-4095



360° swivel base for increased user mobility

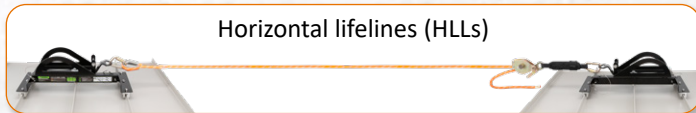
D-ring connection point for:



Energy absorbing lanyards



Vertical lifelines (VLLs)



Horizontal lifelines (HLLs)

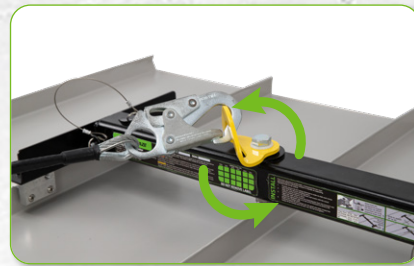


Smart cradle design accommodates most SRL sizes



Anchor post for SRL quick attachment: No disassembly required!

STANDING SEAM SWIVEL ANCHOR 023-4096

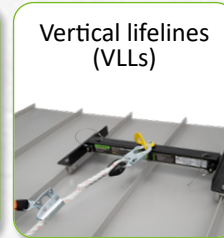


360° swivel D-ring for increased user mobility

D-ring connection point for:



Energy absorbing lanyards



Vertical lifelines (VLLs)



Personal SRLs (SRL-Ps)

SPECIFICATIONS:

023-4095 SRL Swivel Anchor

Weight: 29.4 lbs. (13.3 kg)

Base Dimensions: 27 in. x 12 in. (68.6 cm x 30.5 cm)

Height: 9 in. (22.9 cm)

System Capacity: 1 user max as single point anchor; 2 users max/span for HLLs

023-4096 Swivel Anchor

Weight: 19.2 lbs. (8.7 kg)

Base Dimensions: 27 in. x 12 in. (68.6 cm x 30.5 cm)

Height: 6 in. (15.2 cm)

System Capacity: 1 user max

Both 023-4095 & 023-4096

Minimum roof gauge 26

Materials: Powder coated steel, stainless steel, aluminum

Minimum Breaking Strength: 3,600 lbs. (16 kN)

ANSI Weight Capacity: 130-310 lbs. (59-141 kg)

OSHA Weight Capacity: up to 420 lbs. (191 kg)

OSHA Standards: 1926.502, 1910.140, 1910.66

