



NO ACCESS REQUIRED UNDER ROOF!

Membrane Anchor –
unique design allows easy
drop-through installation
from roof surface

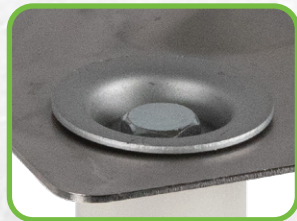
With a 360° working radius and an
elevated eye bolt to prevent wear and
tear on the roof, the innovative
Membrane Anchor is easily installed as
a permanent anchor point.



022-4090
Membrane Anchor



022-4090
Membrane Anchor



SURFACE INSTALLATION

Easy drop-through design
does not require access
to underside of roof

ELEVATED EYE BOLT

Raised 4" to prevent
damage to roof through
abrasion from
connecting hardware

INCREASED PRODUCTIVITY

360° working radius
increases efficiency

VERSATILE USE

Ideal single point anchor
for use with lanyards,
SRLs or VLLs.

Accommodates roof
thicknesses from 3"-12"



**HEAT APPLICATION
OF MEMBRANE
ENSURES
SEAMLESS SEAL
FOR COMPLETE
WEATHER
PROTECTION**

KEY SPECS:

Materials: Stainless steel, galvanized steel, zinc plated steel, PVC, closed cell foam
Base Plate: 11.6" x 11.6" (295 mm x 295 mm)
Hole Diameter: 1-3/16" (30 mm)
Minimum Breaking Strength: 3,600 lbs.
ANSI Weight Capacity: 130-310 lbs.
(59-141 kg)
OSHA Standards: 1910.140, 1926.502, 1910.66

Not for use with HLL systems



225 Wilshire Avenue SW, Concord NC 28025 • 800-230-0319 • safewaze.com

